



AV CaptureAll

How-to Guide: Enable Word Add-in

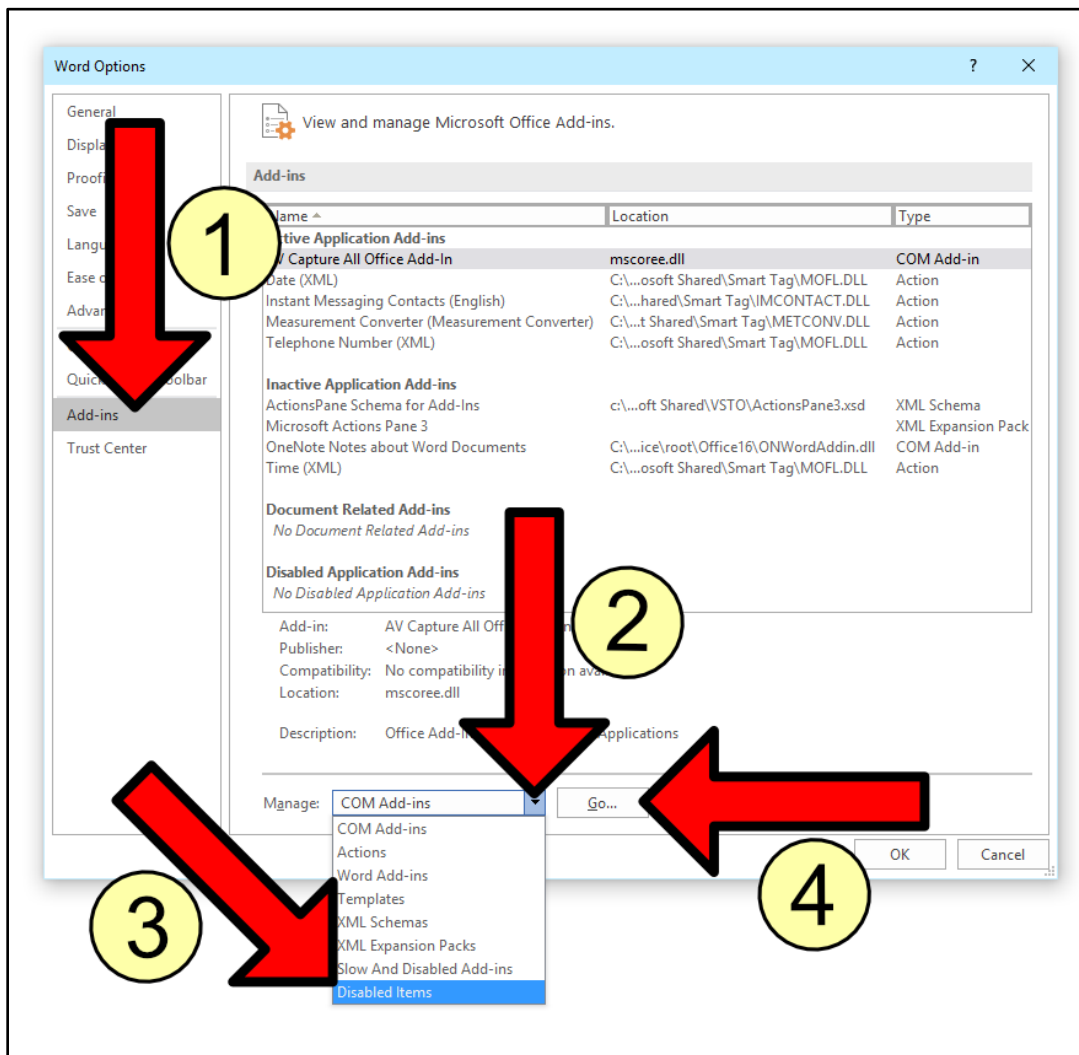
AV Capture All
19125 Northcreek Parkway, STE 120
Bothell, WA 98011
Phone: 888.360.2822
Fax: 253.414.1990
support@avcaptureall.com
<http://www.avcaptureall.net/>

🌀 Overview 🌀

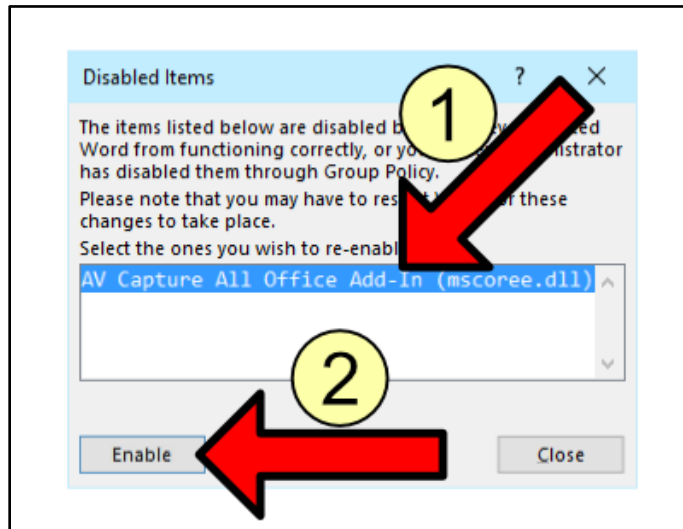
In the event of a Microsoft Word crash, AV Capture's add-in may become disabled in Word. The symptom of this is either the add-in tools become grayed out or the AV Capture ribbon tab goes missing. The purpose of this guide is to walk you through how to re-enable the add-in. If the add-in getting disabled is a recurring issue, please call our customer support line at [888-360-2822](tel:888-360-2822) or email us at Support@AVCaptureAll.com.

🌀 Directions 🌀

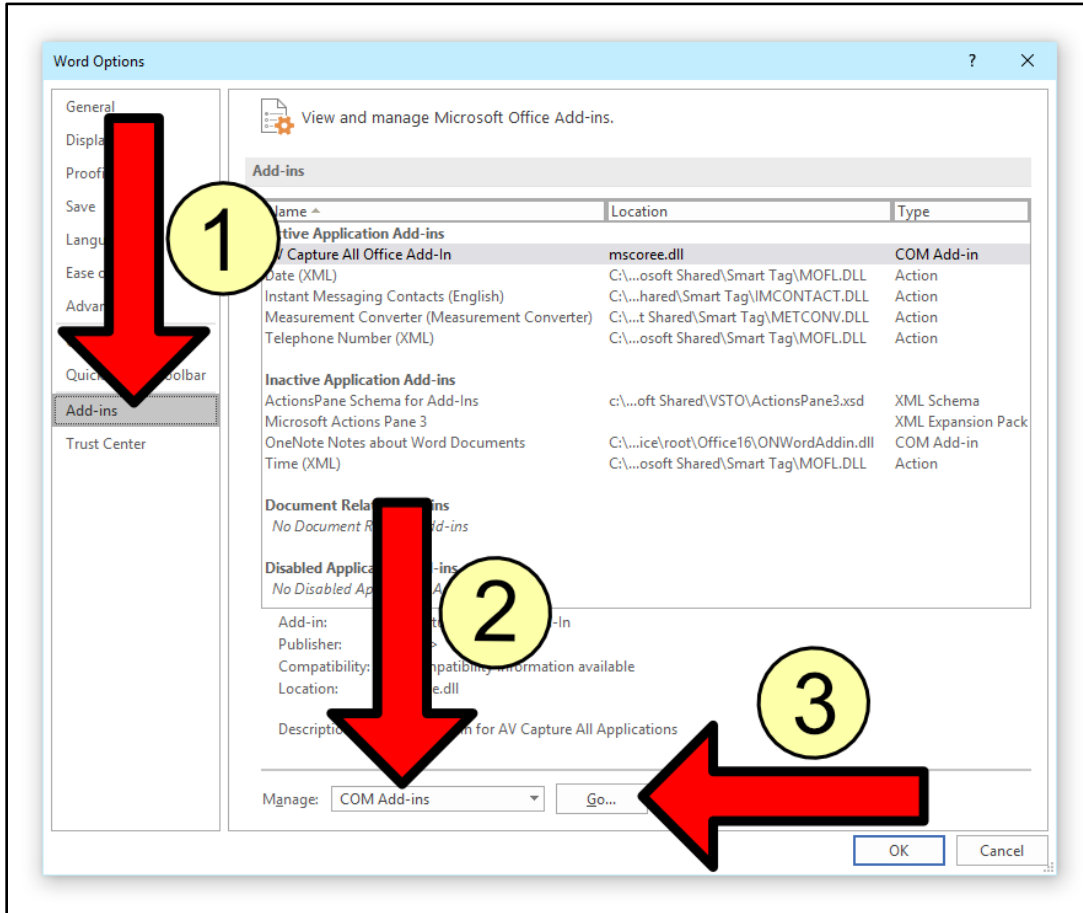
Step 1: In Word, open the Options window from the File tab. In Options, navigate to the Add-ins tab (1). Expand the Manage dropdown menu (2), select "Disabled Items" (3), and click Go (4). This will open the Disabled Items window.



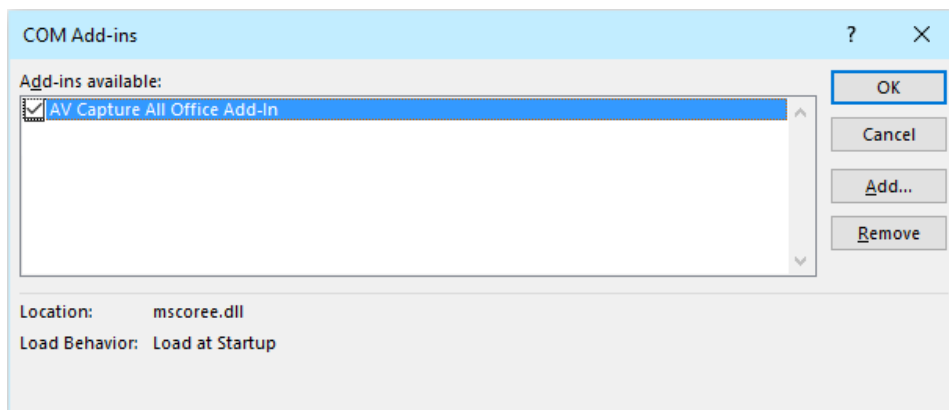
Step 2: Check the Disabled Items window to determine whether the AV Capture All add-in is listed. If no, click Close and skip to Step 3. If yes, select the add-in (①) and click Enable (②).



Step 3: Open the Options window from the File tab. In Options, navigate to the Add-ins tab (1). Verify that COM Add-ins is selected in the Manage dropdown menu (2), and click Go (3). This will open the COM Add-ins window.

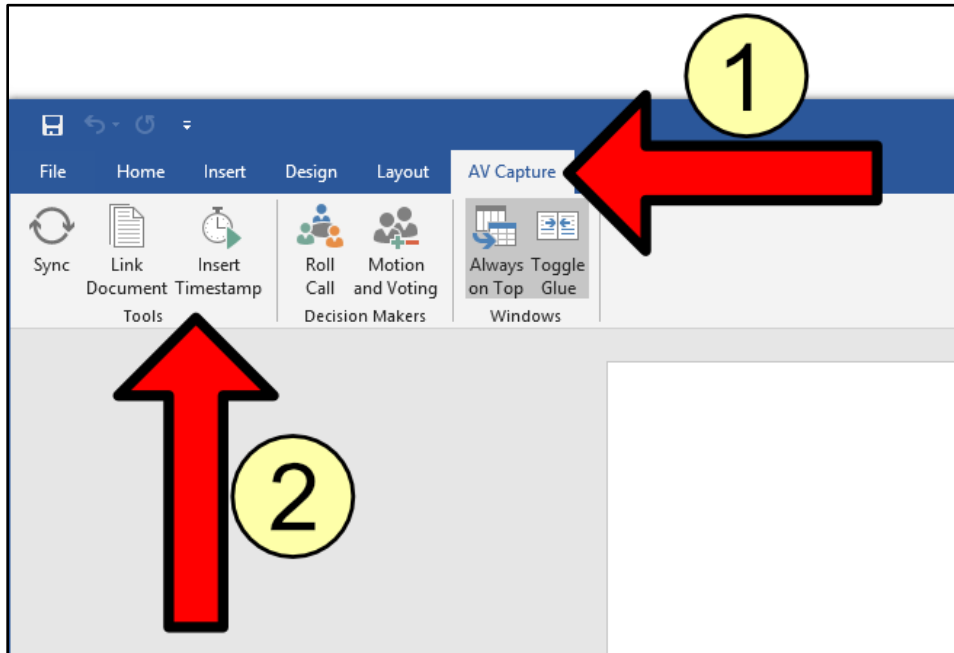


Step 4: Determine whether the checkbox for AV Capture All Office Add-in is checked. If not, check it. Click OK and exit Word.

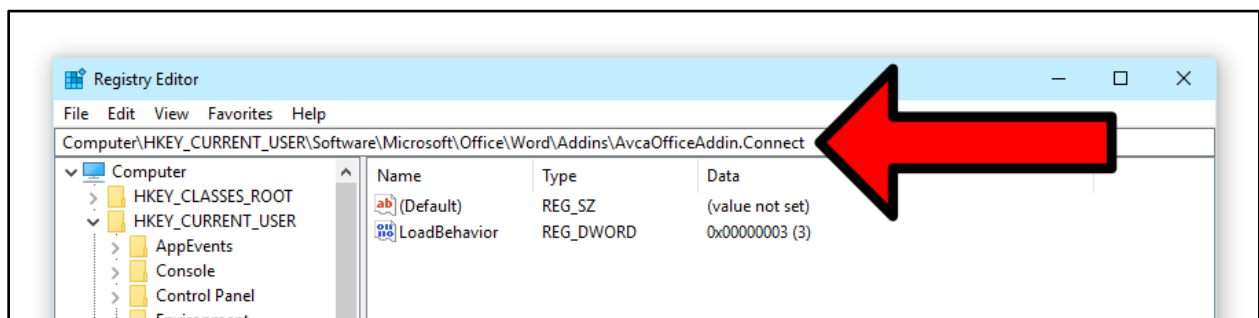


Step 5: Open AV Capture and either open a session that has a document attached, or create a new session and import a document.

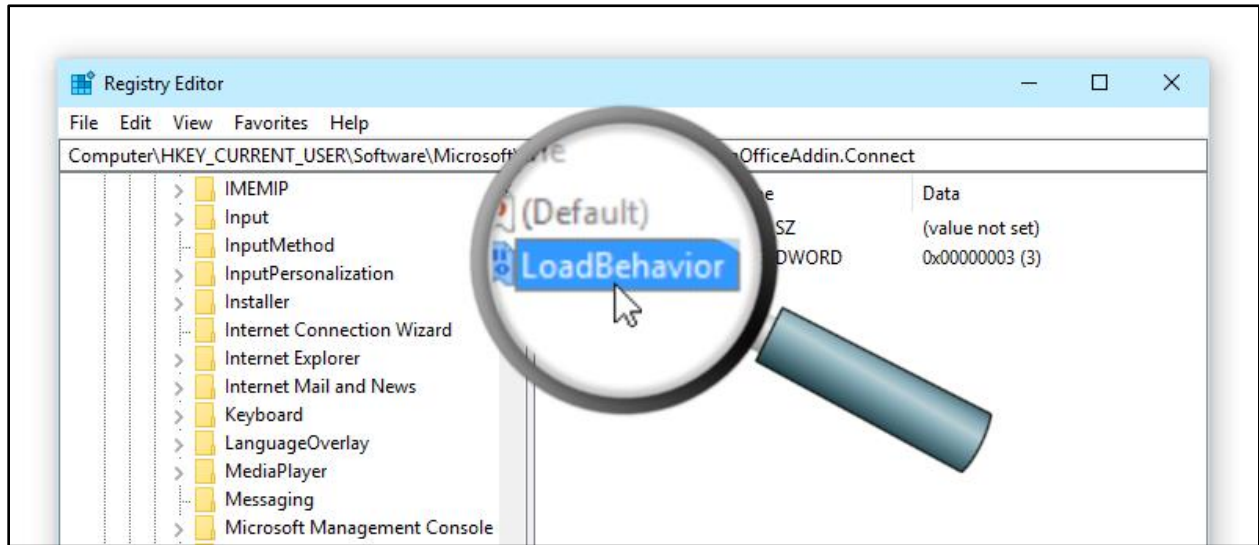
Step 6: Verify that the AV Capture tab is present on the Word ribbon (①), and that the tools are enabled (i.e. not grayed out) (②). If yes to both, mission accomplished! If the AV Capture tab is missing or the tools are disabled, exit Word and continue on to Step 7.



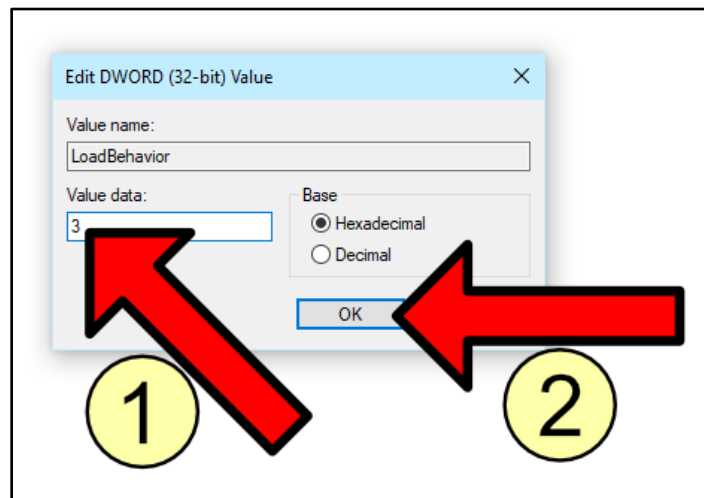
Step 7: The remainder of steps require Windows administrator credentials. Open Registry Editor and navigate to:
Computer\HKEY_CURRENT_USER\Software\Microsoft\Office\Word\Addins\AvcaOfficeAddin.Connect.



Step 8: Double-click LoadBehavior to open the value window.

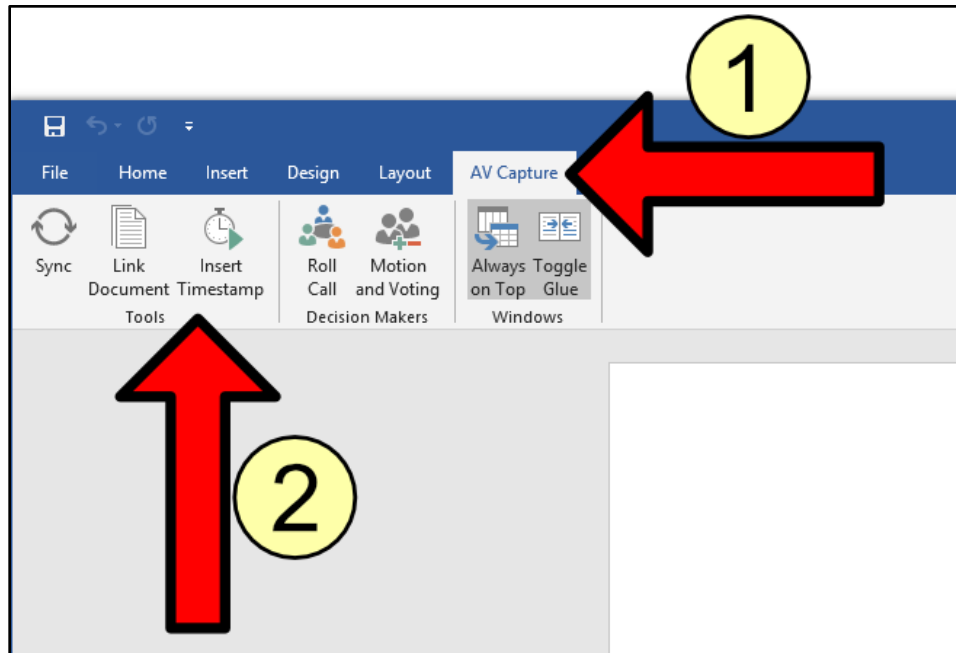


Step 9: In the Value Data text field, enter "3" and click OK. Exit Registry Editor.



Step 10: Open AV Capture and either open a session that has a document attached, or create a new session and import a document.

Step 11: Verify that the AV Capture tab is present on the Word ribbon (①), and that the tools are enabled (i.e. not grayed out) (②).



🌀 Summary 🌀

If you followed the steps above, you should now be able to access and use the AV Capture add-in for Microsoft Word. If this is not the case, please call our customer support line at [888-360-2822](tel:888-360-2822) or email us at Support@AVCaptureAll.com.